

## LMS Energy and Cleanaway: Project Update

LMS Energy is proposing to install a new bioenergy facility at the Lucas Heights Resource Recovery Park (LHRRP). This modern facility will replace the existing on-site power station, which has been in operation since 1998, with upgraded technology designed to enhance the sustainable capture and conversion of landfill biogas into renewable energy.

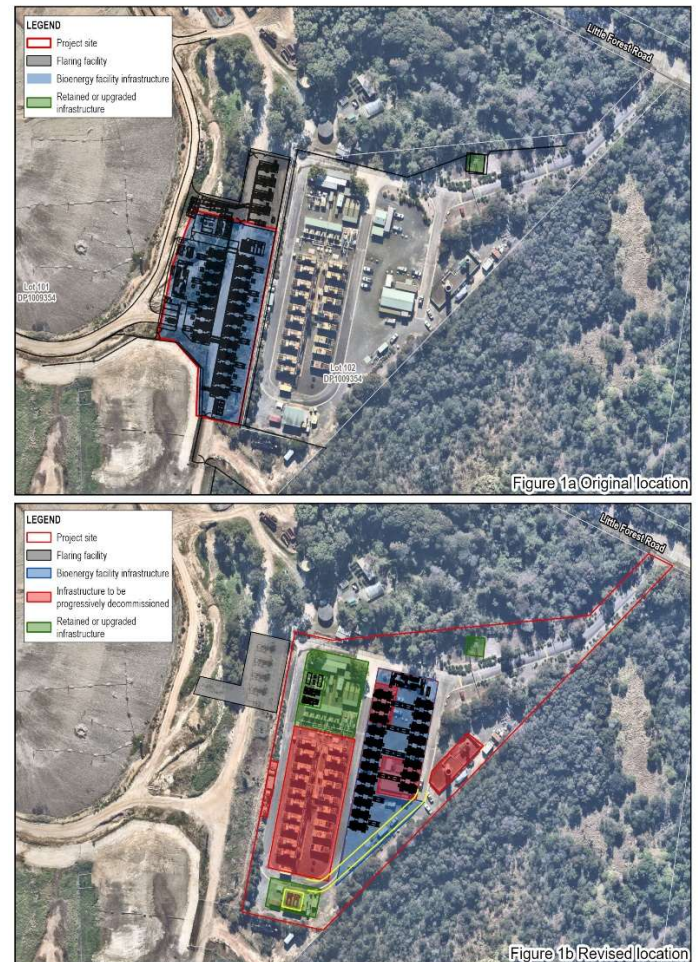
### Updated location

The bioenergy facility was initially proposed to be situated along the western boundary of the existing power station adjacent to the existing landfill and planned parklands.

However, an opportunity has since been identified to relocate the proposed footprint to the existing power station site itself. This relocation offers improved integration with the existing gas infrastructure and provides greater separation from future open space parklands.

The current power station will continue operating throughout the construction and commissioning phases of the new facility.

Once the new facility is fully operational, the old infrastructure will be gradually decommissioned, with a portion retained to support ongoing operations.



**Figure 1:** Project Site Layout

### Seeking Community Feedback

- As a State Significant Development (SSD), this project requires comprehensive assessments, including potential environmental impacts.
- We are currently preparing the Environmental Impact Statement (EIS) and we want to hear from the community.

### About LMS Energy

As Australia's leading landfill biogas company, LMS Energy has delivered more than 65 biogas projects across Australia, New Zealand and the United States over the last 30 years.

LMS Energy and Cleanaway are proud to partner on this project, aiming to provide lasting environmental benefits to the Sutherland Shire region while demonstrating best-practice environmental management and leadership.

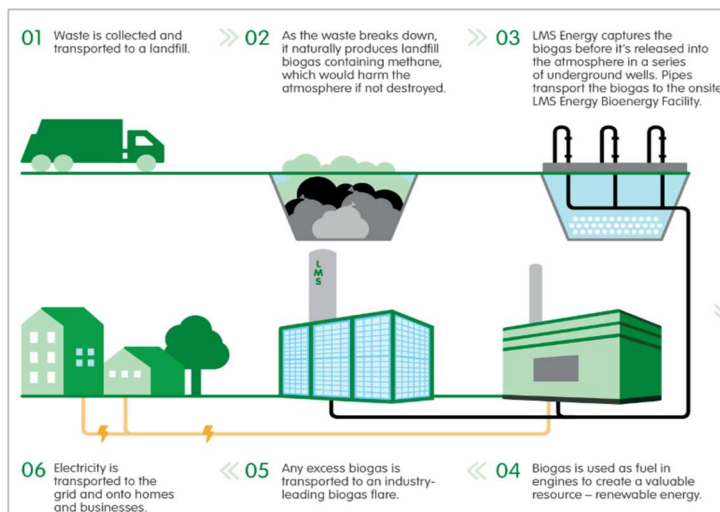
## The new bioenergy facility at Lucas Heights will:

- Generate up to 190,000 megawatt-hours of renewable electricity, equivalent to powering around 30,000 homes.
- Achieve a reduction of over 1 million tonnes of carbon dioxide equivalent greenhouse gas emissions.
- Minimise landfill gas emissions through enhanced capture and sustainable energy recovery.

## Benefits to the Sutherland Shire Community

This project will:

- Enhance emission reduction efforts within the Sutherland Shire
- Maintain effective management of landfill gas emissions through the post closure period at the LHRRP
- Ensure minimal disruption to the community, by constructing the new facility adjacent to the existing power station.



**Figure 2: How it Works**



**Figure 3: Artist Impression of the Bioenergy Facility**

## Next steps:

- We aim for the release of the EIS for public exhibition in October 2025 to allow community members to make a formal submission on the project
- The Department of Planning, Housing and Industry will assess the project for a final determination by the NSW Minister for Planning

For more information, visit [www.lms.com.au/lucas-heights](http://www.lms.com.au/lucas-heights).

## Your Feedback:

For further information or to make a comment, please use the contact details below and include “Lucas Heights Bioenergy Facility” in the subject line:

Email: [cominput@GHD.com](mailto:cominput@GHD.com)

Phone: 1800 810 680

**Scan the QR for more details on this project**



Please ensure all feedback is submitted by 29 September 2025 to be considered as part of the EIS.